



WATERPROOFING SOLUTIONS

*Primers / Below Grade / Internal Wet Areas
Balconies / Roofing / Heavy Duty*



Construction Products Group

A world leading supplier of building envelope solutions

We know that the success of any construction project relies on more than the products that are used, it takes a lot of skill, knowledge, understanding, and expertise to ensure that those products are applied in the best way possible.

At Tremco Construction Products Group (CPG), we're committed to shaping the future through innovative approaches and sustainable solutions.

This commitment is backed up by the fact that we bring together first-class technology with a customer-focused approach, along with skills that have been built up over multiple decades within very specialised fields, to provide a truly unique service.

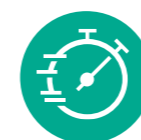
From joint sealing, façade bonding and insulation through to passive fire protection, performance resin flooring, waterproofing, and roofing solutions – our broad range makes us the ideal partner to solve the complex challenges faced by today's architects, contractors, developers, and trades.

With expertise in a range of product technologies, Tremco CPG provides solutions to help you engineer structures that are more efficient to build and maintain, are virtually impervious to the elements, and can provide a multitude of finishes.

Our brands include Tremco, Willseal, Flowcrete, illbruck, Nullifire, and Euclid Chemical.



Why Tremco CPG?



Faster Construction Time

Lightweight, fast-curing and prefabricated products mean less occupant disruption, faster return to service, less revenue lost, and no call-backs.



Technical Support

Our dedicated team of industry professionals are there to support you every step of the way, with onsite visits, Technical Support and advice.



Cost Effective

A broad range of options that fit any budget – but also help you keep an eye on the future to ensure cost-effective ownership, operation and maintenance.



One Point of Contact

Products are tested for compatibility and backed by system warranties – all through a single point of contact, with a single point of responsibility.



Any Look You Want

A wide range of colours and finishes for floors, walls, façades and roofs to provide almost unlimited design potential for your building project.



Impervious to Weather

Products designed for maximum protection from the elements, including above and below ground-level solutions to prevent the ingress of water.



Better Insulated

Industry leading brands that provide solutions for more efficient building construction and operation, and exceeding strict energy codes for insulation.



Leading Edge Sustainability

Construction solutions that meet green building standards, enhancing building efficiency and conscious of the environment that surrounds us.

With so many areas and applications to consider, choosing a waterproofing solution can be difficult. Whether applying in basements and lift pits, or onto roof structures and everything in-between, ensuring the building's structure is protected against the ingress of water is paramount in order to safe-guard the longevity of the structure.

At Tremco CPG, we understand that every project has it's unique challenges, so we have developed an array of solutions to suit the varying requirements of waterproofing protection. Our team of specialists are on hand throughout the region to assist with project specifications and application training to ensure the correct solution is selected.



Our waterproofing technologies include...

- Liquid Applied Systems
- Trafficable Membranes
- Hot & Cold Applied Sheet Membranes
- Cementitious Technology
- Drainage and Associated Products
- Primers

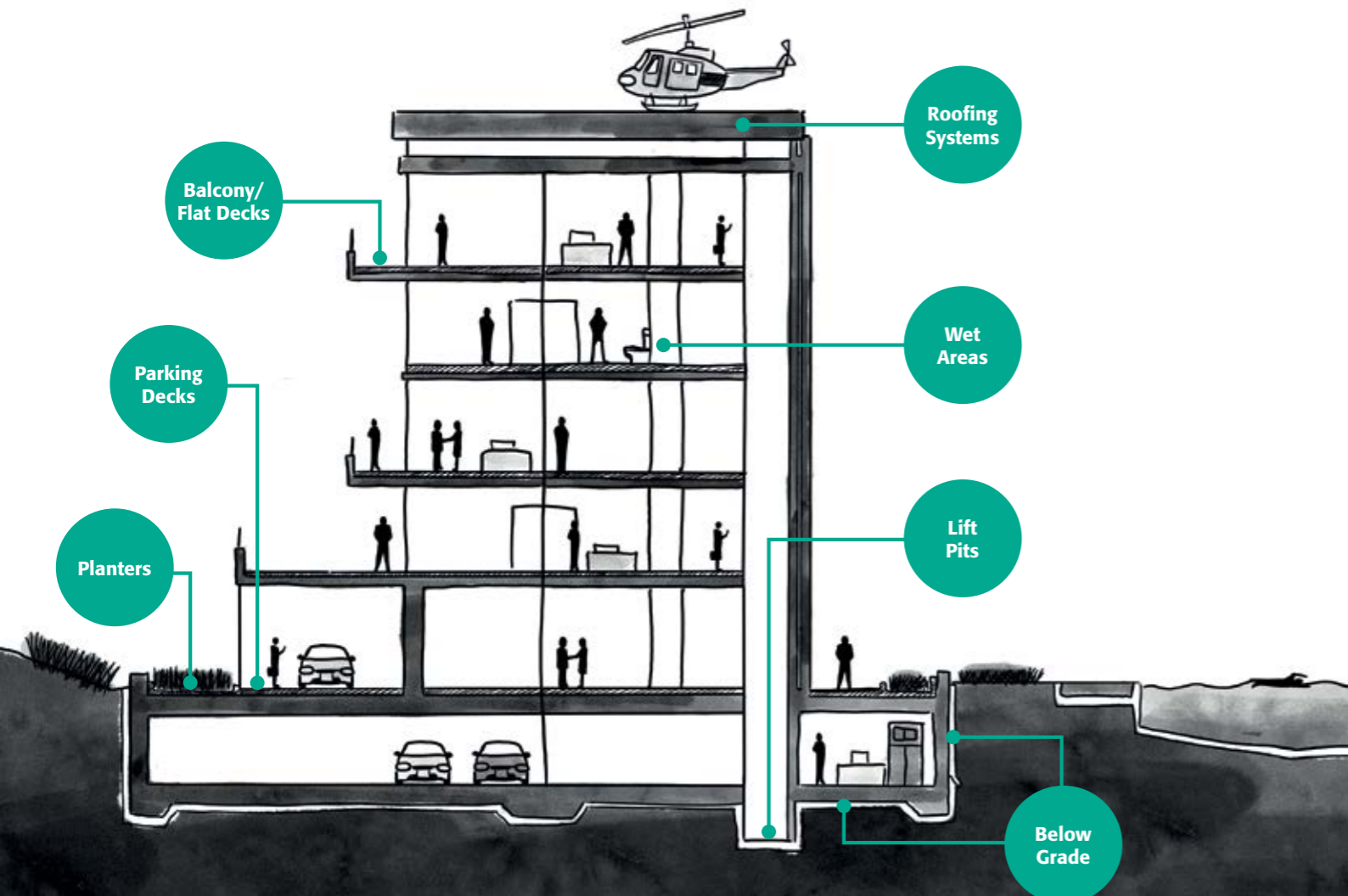
PRODUCT SELECTION GUIDE*



Scan the QR code to view all our Technical Data Sheets, Safety Data Sheets, Technical Drawings and more.

	Below Grade	Planters	Internal Wet Areas	Balconies	Roof	Green Concrete*	Low VOC	One Part	Quick Dry	Adheres to Concrete*	Adheres to Metal*	Install over Existing Membrane*	UV Resistant
PRIMERS													
Vulkem 171			•	•	•			•	•	•			
TREMproof 200EC			•	•	•	•	•			•			
Vulkem 191QD								•	•			•	
TREMprime Non Porous Primer							•	•	•		•		
SHEET MEMBRANES													
Paraseal	•					•	•	•	•				
TREMproof Torch-On	•	•		•	•	•	•		•	•	•	•	•
SPRAY MEMBRANE													
TREMproof P85	•	•		•	•		•		•	•	•		
LIQUID MEMBRANES													
AlphaGuard BIO				•	•		•		•	•	•	•	•
Alumanation 301					•			•	•			•	•
TREMproof 201/60	•	•					•	•		•	•		
TREMproof 250GC	•	•					•	•	•	•	•		
Vulkem H2 Plus			•	•			•	•		•	•		
TREMproof 90			•				•			•	•		
Vulkem NEM (Non-Exposed Membrane)			•	•				•		•	•		
Vulkem 350/346				•	•			•		•	•		•
Vulkem 350NF/951NF				•	•		•			•	•		•
Vulkem 360NF/951NF				•	•		•			•	•		•
Vulkem 360NF/951NF/951NF				•	•		•			•	•		•
Vulkem 350/346/346				•	•			•		•	•		•
Deckcoat EP							•			•			
Deckshield UV										•			•
Deckshield ED Rapide							•		•	•			•
Deckshield ID							•			•			•
Deckshield ID Rapide							•		•	•			•

*This guide is used as a general reference. Please consult your local Tremco CPG representative for regional recommendations based on your local building practices and warranty requirements.



PRIMERS



PROJECT PROFILE: Sea Temple, Port Douglas



Vulkem 171

One-Part, Rapid Drying, Solvent-Based Primer for Porous Substrates

Vulkem 171 primer is a quick-drying, one-part, moisture-curing primer that enhances adhesion to concrete, plywood and other porous substrates where Vulkem urethane sealants, membranes or coatings will be applied.



Vulkem 191QD

One-Part, Low Odour, Rapid Curing Interlaminary Primer

Vulkem 191 QD Primer is a quick-drying, one-part, moisture-curing primer for use to promote interlaminary adhesion between Tremco waterproofing layers after the membrane has been exposed for a prolonged amount of time or after a weather event where the primary membrane has lost its initial tack.



TREMproof 200EC

Two-Part, Water-Based Epoxy Primer and Vapour Retarder for Porous Substrates

TREMproof 200EC is a two-component waterborne epoxy primer designed to act as a vapour retarder on porous substrates, to minimise vapour drive into liquid applied waterproofing membranes.



TREMprime Non Porous Primer

One-Part, Low Odour Primer for Non-Porous Substrates

TREMprime non-porous primer is a one-part primer, used on metal or plastic substrates to enhance the adhesion of all Tremco polyurethane sealants and membranes.



TREMproof Torch Bitumen Primer

One-Part, Solvent Based Primer

TREMproof Torch Bitumen Primer is a solvent based modified bitumen primer designed to assist with adhesion of the TREMproof Torch membranes to the substrate. The TREMproof Torch Bitumen Primer must be installed prior to Tremco's TREMproof Torch membrane.

About

Sea Temple is unrivalled as "The 5 Star" Resort in Port Douglas. The beautifully manicured grounds, stylish accommodation, world class facilities and spectacular 3000m² central swimming lagoon, places Sea Temple in another league when compared with other resorts in the region.

Challenge

When you are working with one of the most prestigious resorts in Port Douglas where the highest quality of facilities, services and experiences are expected, you need to provide unparalleled results. In this scenario, the roof of two premium villas had been leaking for some time, providing not only water ingress, but unsightly stains on the interior from water damage.

The solution needed to be low odour to not disrupt the experience of paying guests whilst the work is being completed. The harsh North Queensland conditions demand a high quality product strong enough to withstand all types of weathering. So when Sea Temple Apartments discovered a problem with their waterproofing a high quality but aesthetically pleasing solution was the only option.

Solution

With the contractor previously using liquid membranes (non Tremco), a more robust and durable solution was needed which would also provide the warranty demanded of a high quality building such as Sea Temple.

Having previously completed many other successful projects with Tremco Systems, the applicator had trust in the Tremco solution, and a dual layer of TREMproof Torch 3000 seemed the logical choice for this end high development. The low VOC and odour levels of TREMproof Torch 3000 helped seal the deal in the built up 5 star accommodation to reduce neighbourhood discomfort.

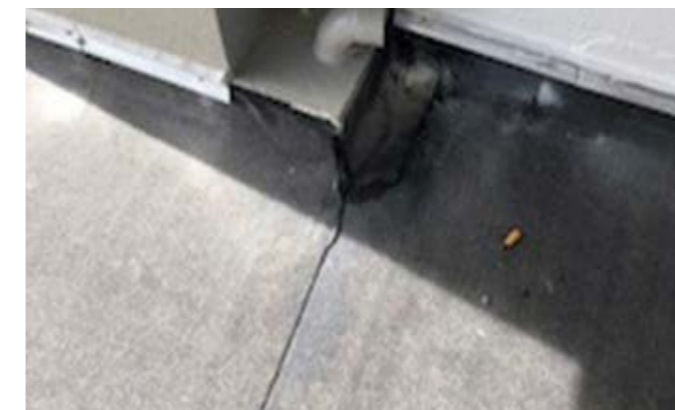
Project Type	Remedial Waterproofing
Project Size	Multi-Storey Residential
Products Used	TREMproof Torch 3000, TREMproof Torch Bitumen Primer



Low VOC solution required to reduce neighbourhood discomfort.



Robust solution required due to harsh conditions in Northern Queensland.



BELOW GRADE WATERPROOFING SYSTEMS



PROJECT PROFILE: Multi-Storey Healthcare Facility



Paraseal (LG/SW)

HDPE/Bentonite Dual Waterproofing Sheet Membrane

Paraseal is a sheet waterproofing membrane consisting of 20 mils (0.5 mm) of HDPE, expandable, granular bentonite and a protective layer of spun-bonded polyester which creates a dual waterproofing membrane.



TREMproof 250GC

Rapid Curing, Fluid Applied, Elastomeric Membrane

TREMproof 250GC is a rapid-curing, high solids, VOC compliant modified polyurethane waterproofing membrane that can be applied to green concrete.



TREMproof 201/60

High-Solids, VOC-Compliant, Modified PU Membrane

TREMproof 201/60 is a modified polyurethane waterproofing membrane is a one-part, moisture-curing elastomer.



TREMproof Torch 3000

3mm APP Modified Bituminous Torch Applied Membrane

TREMproof Torch 3000 is a 3mm thick, APP modified bituminous torch applied waterproofing membrane base sheet. TREMproof Torch 3000 is heavy duty, high strength non-woven polyester mat, impregnated and coated with a tough APP polymer modified bitumen compound.



TREMproof Torch Antiroot

APP Modified Bituminous Torch Applied Membrane with Antiroot Properties

TREMproof Torch Antiroot is a 3.8mm thick, APP modified bituminous torch applied waterproofing membrane which is polyester spunbond, reinforced glass filament with extremely effective antiroot properties.

About

This Child Health and Learning facility in Manly, delivers specialist child healthcare for up to 15,000 families a year from rural, regional and remote New South Wales and beyond.

Challenge

The two biggest waterproofing challenges for this build were:

1. Below Grade - Non structural Blinding Slab, 4 metres below sea level and less than 50 metres from Manly Beach. This build had decanters pumping over 1.3 million litres of water per day away from the site during the construction phase.
2. The creation of a waterproofing solution which would not fail if the membrane was penetrated, be it in the pre or post construction phase.

Due to the proximity to the beach and the build having a raft slab in the basement, a standard cookie cutter below-grade waterproofing solution was not an option for this build.

Solution

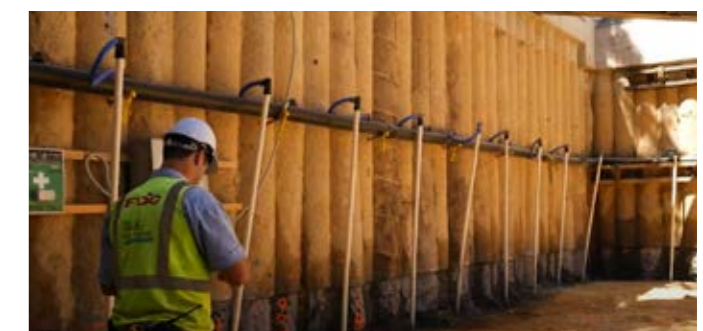
Tremco was asked to provide a solution for this complex build. The below grade waterproofing quickly became the biggest and most challenging waterproofing area within the build, being only 50 metres from the ocean and 4 metres below sea level, we needed a reliable waterproofing solution, that would also be robust enough to withstand any punishment trades delivered post installation, we recommended and used Paraseal SW (Saltwater).

To ensure the job ran smoothly Tremco conducted iAuditor Reporting: iAuditor is an onsite quality assurance program Tremco conducts for the builder and applicator to ensure our products are being installed correctly and to specification. This gives the builder the confidence that there will be no product related waterproofing defects within the build.

Overall, both the builder and developer were happy with the end result, which provided the warranty and quality required of such a development.



The site was 50 metres from Manly Beach and 4 metres below sea level



1.3 million litres of water daily was pumped from the site

Project Type	Below-Grade Waterproofing
---------------------	---------------------------

Project Size	Six Storey Multi-Purpose
---------------------	--------------------------

Products Used	Paraseal SW
----------------------	-------------

INTERNAL WET AREAS WATERPROOFING SYSTEMS



PROJECT PROFILE: Rouse Gardens, Rouse Hill



Vulkem Non Exposed Membrane (NEM)

One Part, Single Coat Application, Polyurethane Membrane

Vulkem NEM is a single component, moisture curing, tough polyurethane membrane that has been a market leader in Australia for more than 20 years. Single coat application makes Vulkem NEM ideal for internal and external areas where fast pace construction occurs.



Vulkem H2 Plus

Low Odour, Low VOC, Modified Acrylic Membrane with Micro Fibres

Vulkem H2 Plus is a single component, rapid cure, modified acrylic waterproofing membrane, incorporating micro fibres to increase strength and wet film thickness.



TREMproof 90

Two Component, Liquid Applied Membrane for Internal Wet Areas

TREMproof 90 is a two-component, liquid applied membrane designed to be used under tile and vinyl flooring, for internal wet area waterproofing areas. TREMproof 90 is a flexible, fast drying, low odour waterproofing membrane with fibre reinforcement for increased wet film thickness.

About

In response to unprecedented demand, Rouse Garden is filling the void of modern-day homes close to trains, shops & jobs at the most competitive price on the market. From floor to ceiling glass walls, timber hardwood flooring and a private rooftop garden terrace complete with BBQ and lounge areas. Living rooms have been purposed to allow seamless indoor and outdoor transitions, blurring the boundaries between inside and out and elevating your home to new heights.

Challenge

Presented with tight timelines, and expectations of high quality, the contractor was tasked with working on Rouse Gardens. Waterproofing both the internals and roof of the building, the builder demanded warranties to match the project requirements and to deliver a quality finish expected of this high profile project. To streamline this build, availability of stock and ease of application were key product requirements needed from the project, which Tremco were tasked with delivering.

Solution

The versatility of Vulkem NEM and H2 Plus being used as a system for internal wet areas allowed for a quality result to be achieved. For outdoor areas, Vulkem 350NF/951NF Pedestrian coating was installed to provide a low odour durable trafficable solution for the roof. Given the tight time frames, backed with long warranties to match product performance, Vulkem NEM, Vulkem 951 NF and Vulkem H2 Plus provided the quality result demanded from the builder which resulted in both Builder, and Applicator very satisfied with the job.

Project Type	Waterproofing
Project Size	Bathrooms, Balconies, Roof
Products Used	Vulkem H2 Plus, Vulkem NEM, Vulkem 350NF/951NF



Vulkem NEM's single component formula allows for a more consistent application and thickness.



Vulkem 350/951NF's fast cure allows the area to be returned to use 12 hours after installation in most instances.

Need a sample..

We have a great variety of resource available to be ordered to help you with your next project. Material such as:

- Samples
- Brochures
- Product Data Sheets
- Safety Data Sheets

CONTACT US FOR MORE INFORMATION
Ph: 1800 318 038
Email: specifications@tremco.com.au



Over 140 Kitchens



Over 275 Bathrooms

BALCONY AND PODIUMS



SEALANTS



Vulkem Non Exposed Membrane (NEM)

One Part, Single Coat Application, Polyurethane Membrane

Vulkem NEM is a single component, moisture curing, tough polyurethane membrane that has been a market leader in Australia for more than 20 years. Single coat application makes Vulkem NEM ideal for internal and external areas where fast pace construction occurs.



TREMproof P85

Two-Component, Rapid Curing, 100% Solids, Spray Applied, Hybrid Polyurea Membrane

TREMproof P85 is a 100% solids, spray applied hybrid polyurea waterproofing membrane that allows for rapid installation, and assists with accelerated construction schedules. Also able to be used on roofs and trafficable areas.



PolyPad Paver Support 2.0

Pedestal Support

Paver Support 2.0 provides rapid drainage of surface water through uniform open joints in the paver surface. It eliminates any concern of efflorescence as there is no screed or tiling grout present in the paver system. It also eliminates the risk of debonding pavers as a result of improper installation and/or tile movement.



Dymonic 100

One Part, High Performance, High Movement, Polyurethane Sealant

Dymonic 100 is a highly versatile sealant that has a unique capability to adhere to damp or green concrete. Dymonic 100 is a durable, flexible, paintable sealant that offers excellent performance in moving joints and exhibits tenacious adhesion once fully cured. Typical applications for Dymonic 100 include: expansion and control joints, precast concrete panel joints, sealant caulking under all Tremco liquid applied waterproofing membranes, roof membranes, and traffic coatings.



TREMflex 50

One Part, High Movement, Easy to Gun, Polyurethane Joint Sealant

TREMflex 50 is a low modulus joint sealant, especially formulated to ensure bubble free cure even at very high temperatures and humidity climatic conditions, including under waterproofing membranes, in-situ concrete, precast panels, brick & block work and metal.



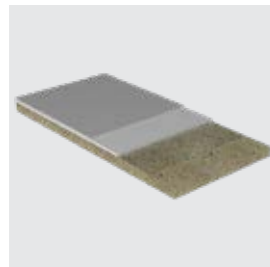
Dymonic FC

One Part, Fast-Cure, Hybrid, Paintable, Moisture Curing, Isocyanate and Silicone Free, High UV Resistant Sealant

Dymonic FC is a low modulus, single-component, moisture-cure polyurethane hybrid sealant. Formulated with proprietary polymer technology, Dymonic FC provides a fast cure, paintable sealant that is fantastic for control joints and precast concrete panel joints.



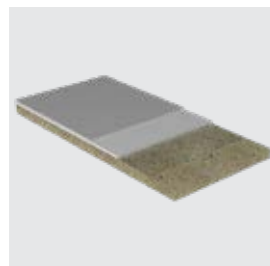
ROOFING SYSTEMS LIQUID APPLIED



Vulkem 350/346

UV Resistant Pedestrian Traffic Waterproofing System Comprised of Moisture Cured, Single Component Membranes

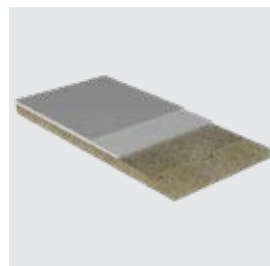
Vulkem 350/346 is a one component waterproofing system comprised of tough-curing liquid polyurethane. It cures to form a durable rubber membrane surface that provides a lasting and easy-to-clean waterproof and trafficable coating.



Vulkem 350NF/951NF

Low VOC, UV Resistant Pedestrian Traffic Waterproofing System Comprised of Low VOC, Multi-Component Membranes

Vulkem 350NF/951NF is a neighbourhood friendly waterproofing system comprised of tough-curing liquid polyurethane. It cures to form a surface that provides a lasting and easy-to-clean trafficable coating. May be used to apply a seamless, monolithic waterproof membrane to concrete and primed metal surfaces.



Vulkem 360NF/951NF

UV Resistant Pedestrian Deck Coating Waterproofing System Comprised of Low VOC, Multi-Component Membranes

Vulkem 360NF/951NF is a two component modified polyurethane pedestrian deck coating system composed of a base coat and a UV stable top coat. This unique waterproofing system is designed to have tenacious adhesion, extreme impact and abrasion resistance along with remarkable chemical stability.



ROOFING SYSTEMS SHEET APPLIED AND REMEDIAL



TREMPROOF Torch 3000

3mm APP Modified Bituminous Torch Applied Membrane

TREMPROOF Torch 3000 is a 3mm thick, APP modified bituminous torch applied waterproofing membrane base sheet. TREMPROOF Torch 3000 is a heavy duty, high strength non-woven polyester mat, impregnated and coated with a tough APP polymer modified bitumen compound.



TREMPROOF Torch 4000M

4mm APP Modified Bituminous Torch Applied Membrane with Mineralised Surface

TREMPROOF Torch 4000M is a 4mm thick, APP modified bituminous torch applied waterproofing membrane which is polyester spunbond, with glass filament reinforcement. TREMPROOF Torch 4000M is coated with a highly UV resistant mineralised surface.



AlphaGuard BIO

UV Resistant, Two-Part, Bio-Based, High Performance Polyurethane Waterproof System

AlphaGuard BIO is an extremely high performing composite waterproofing system, designed with a focus on roofing restoration. AlphaGuard BIO has the ability to be installed over various existing roofing membranes in order to minimise tenant disruption and extend the life of the roof for an additional 20 years.



Alumanation 301

Premium Grade Metallic Pigmented, Industrial Maintenance Coating

Alumanation 301 reflects heat, prevents corrosion, and protects against mild acid and alkali fumes on a variety of substrates. The one coat application makes it economical and easy to use. Alumanation 301's aluminium finish is highly reflective, protecting the roof from harmful UV, as well as keeping building cooling costs to a minimum.

PROJECT PROFILE:

ANZAC Memorial Sydney



About

The ANZAC Memorial was designed as a sculptural monument, a unique collaboration between architect Charles Bruce Dellit and sculptor George Rayner Hoff; it is arguably one of the finest examples of the union of architecture and art in Australia.

The building is a striking architectural form, symmetrical on both axes. It uses elements reminiscent of traditional Gothic architecture (buttresses, cathedral windows, high ceilings) in the Art Deco style. The Memorial is adorned externally with twenty sculptures representing the units of the Australian Imperial Force (AIF). These are the sentinels of the building, keeping watch while representing the fallen to whom the building is dedicated.

Bruce Dellit's vision for the Memorial included a still pool bounded by poplars to the north of the building (included for their significant symbolic association with the battles in France and Belgium), and a cascading fountain to the south.

The Hall of Service, at the centre of the Centenary Extension, is a civic space that architecturally and artistically mirrors the Hall of Silence. The LC Hall was named in acknowledgement of the original Memorial halls and to recognise more than a century of service by Australian servicemen and servicewomen. At the threshold to the space are the words: "NSW Service with and for All Australians".

Project Type Restoration Rebuild

Project Size 15,000m²

Products Used TREMproof Torch, TREMproof 90, Vulkem NEM, Paraseal LG



Tremco provides regular iAudit reports on the jobsite to ensure consistency is maintained.



Over 3,000m² Paraseal LG was installed Below Grade due to its speed of installation and unique self sealing properties.

Challenge

When restoring a National War Monument visited by thousands of people annually, you need to provide the highest quality results and finishes expected of such a significant structure in our history. The challenge here, comes from creating a restoration solution on a building which was designed in the early 1930's, which will be flexible enough to maintain the architects core design features but also created and executed within a tight timeframe in time for ANZAC day. The solution needed to encompass modern technology with traditional design features to ensure the restoration lasts for the next 100 years as a memorial to our fallen heroes.

Solution

Tremco worked closely with the contractor and builder to provide a solution which was both timely and high quality.

Over 15,000m² of Tremco products were installed on this historic site. Tremco provided regular iAudit reports on the jobsite (iAudits is a quality control measure used to ensure the products are being applied consistently)

During regular site visits, Tremco were able to provide a high level of customised Technical information and design advice to ensure the project ran smoothly and to the builder's expectations.

The contractor used the following products on the restoration:

- 3,000m² of Paraseal LG was installed Below-Grade due to ability to self-seal if penetrated.
- Over 12,000m² of Torch-On (TREMproof 3000 and TREMproof 4000) was installed in a double layer for the water fountain and external walkways.
- Vulkem NEM was installed for all internal membrane requirements.



iAuditor reports were vital in ensuring the quality was maintained throughout the project

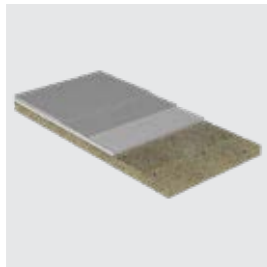


Over 12,000m² of TREMproof Torch was used on the water fountains and walkways

HEAVY DUTY PEDESTRIAN



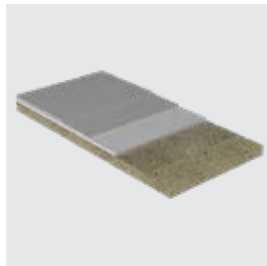
PROJECT PROFILE: Margaret Whitlam Grandstand Waverly Oval



Vulkem 360NF/951NF/951NF

UV Resistant Trafficable Waterproofing System Comprised of Low VOC, Multi-Component Membranes

Vulkem 360NF/951NF/951NF is a modified polyurethane traffic deck coating system composed of a base coat (Vulkem 360NF), heavy duty intermediate coat (Vulkem 951NF) and a UV stable top coat (Vulkem 951NF). Is designed to have tenacious adhesion, extreme impact and abrasion resistance along with remarkable chemical stability.



Vulkem 350/346/346

UV Resistant Trafficable Waterproofing System Comprised of a Tough Curing Liquid Polyurethane

Vulkem 350/346/346 is a composite waterproofing system comprised of tough-curing liquid polyurethane. It cures to form a durable rubber membrane surface that provides a lasting and easy-to-clean waterproof and trafficable coating. Vulkem 350/346/346 may be used to apply a seamless, monolithic waterproof membrane to concrete and primed metal surfaces.

About

The sporting history of Waverly Oval dates from the 1880's when the Waverley Cricket Club gained approval to construct a pitch.

The first pavilion was built by the Waverley Cricket Club in the 1890s and Council built a second pavilion in 1908 with expanded facilities for the benefit of the cricketers and the public. This Pavilion was replaced in 1939 with an Inter War Functionalist style building.

In April 2012, the new Waverley Park Pavilion was named the Margaret Whitlam Recreation Centre, in honour of the long association the late Margaret Whitlam (AO) had with the Waverley area.

Challenge

Remediation of the pedestrian areas of Margaret Whitlam Grandstand was completed 5 years ago but unfortunately was not successful due to product failure (not Tremco). Council contacted Tremco to provide an acceptable solution with the requirements that the new system needed to come with a 15 year warranty.

The challenge of this project was not the 15 year warranty period, but the need for a low odour solution due to the area being in a Public/Government venue. Not all membranes have Low VOC properties.

Solution

Tremco recommended Vulkem 350/951NF/951NF for the job, which is not only low odour but also offers a 15 year warranty period as required from the council. Tremco offering onsite support throughout the project gave the council confidence in our product.

Vulkem 350/951NF/951NF, is a composite waterproofing system comprised of tough-curing liquid polyurethane. It cures to form a durable rubber membrane surface that provides a lasting and easy-to-clean waterproof and trafficable coating. Textured surfaces for traffic will use an aggregate-laden top membrane to aid in wear and slip resistance.

Both the Council and Contractor have been very happy with the end product, which have resulted in additional opportunities for Tremco.

Project Type	Pedestrian Coating
Project Size	Over 500m ²
Products Used	Vulkem 360NF/951NF/951NF



Low VOC solution required due to the area being in a Public/Government venue.



Council required a system which provided a 15 Year Warranty.

*Tremco Construction Products Group offer a series of
FREE online Formal CPD presentations...*

We can provide presentations to your firm as part of a customised online company meeting or you can join one of our group meetings.

Each presentation we will provide your company with:

- Your CPD certificate for all participants
- AIA formal recognition
- Product Samples for your records if requested



CONTACT US FOR MORE INFORMATION

Ph: 1800 318 038

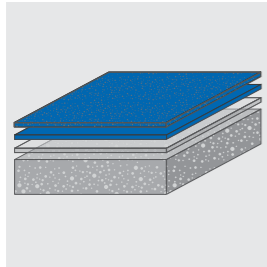
Email: specifications@tremco.com.au



HEAVY DUTY VEHICULAR

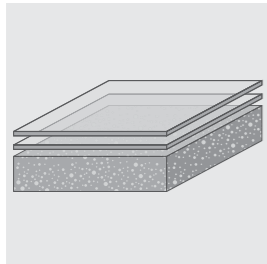


PROJECT PROFILE: Star City Casino



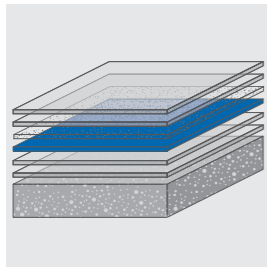
Deckcoat EP

Deckcoat EP is a car park deck coating system designed to provide a colourful, watertight surface for car park bays and straight driveway areas. Typically used to cosmetically enhance, reduce noise and brighten internal car parks.



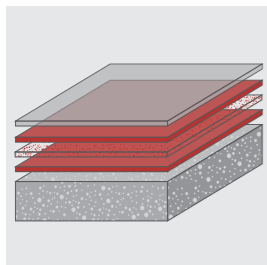
Deckshield UV

Deckshield UV is a 2 part UV stable polyurethane sealer. Deckshield UV can be used as a high performance sealer as part of Flowcrete systems or as a stand-alone sealer for concrete.



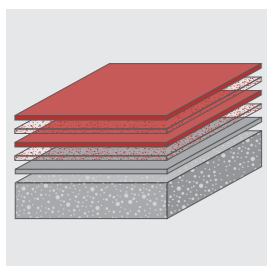
Deckshield ED Rapide

Deckshield ED Rapide is a flexible PUMMA car park deck coating which provides a colourful, waterproof and durable surface for exposed decks. Complies with AS 4654.1:2012 Waterproofing Membrane standard.



Deckshield ID

Deckshield ID is a low VOC, flexible polyurethane deck coating system that transforms intermediate decks of multi-storey parking structures including turning areas and high traffic zones.



Deckshield ID Rapide

Deckshield ID Rapide is a flexible MMA car park deck coating system which provides a colourful and durable platform for vehicular traffic. The system is developed to enable very fast track applications, dramatically reducing program time.

About

Opening in 1994 "The Star" in Pyrmont, Sydney, is the second largest casino in Australia after Melbourne's Crown Casino. Overlooking Darling Harbour, The Star, features two gaming floors, eight bars, seven restaurants, 351 hotel rooms and 130 serviced and privately owned apartments. It also includes the 2,000 seat Sydney Lyric theatre and Event Centre.

Challenge

The Star Casino needed a bespoke, high-end car park floor to impress its visitors before they even step through the front door. The Star, wanted to revitalise its parking facility as well as extend the luxurious atmosphere of its private Sovereign Room, which is reserved for high rollers and VIPs.

Solution

To achieve this, 85,000m² of Flowcrete Australia's specialist deck coating systems were installed across the five-storey car parking facility. The car park floor had to meet multiple strict criteria, such as not causing dust, being odour-free, easy to clean and glossy. For the Sovereign Room's exclusive parking zone, 11,500m² of Deckcoat EP and 1,500m² of Deckshield ID was applied in custom colours to craft a stylish and on-brand atmosphere in the by-invitation-only area. The Sovereign logo was also incorporated into the car park coating to enhance the visitor experience. Contrasting shades of grey were used to define the parking bays and driveways, while harbour blue was used to mark out disabled spaces. Contrasting yellow and white line markings created clear pathways to help patrons safely navigate around the building. All the line marking and hatching, including the disabled bays, was completed to the Australian Standard AS/NZS 2890.6-2009.

Project Type	Parking Garage
Project Size	85,000m ²
Products Used	Deckcoat EP, Deckshield ID



PROJECT PROFILE:

Parrallel Apartments



About

Parallel Apartments offer the best of everything Perth has to offer. With riverfront serenity, with the luxury of watching waves gently lap the shore from your balcony. Yet you're a mere walk away from the non-stop action of WA's premier entertainment complex, Crown Perth.

You're minutes away from work with the CBD at your doorstep. Yet the resort feel of this complex makes you feel a million miles away on a holiday.

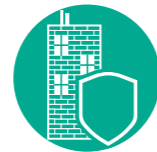
The building has 13 levels, consisting of four levels of basement parking, a podium base with pool deck, and a tower section. With the café taking pride of place on the ground floor.



Project Type Multi Storey Residential

Project Size 13 Levels

Brands Featured Tremco, Flowcrete, Illbruck



Partnering with Tremco CPG allows the builder to provide solutions for many different areas of the construction envelope.



Vulkem H2 Plus - Low odour allows for use in low air flow areas like bathrooms, wash-rooms, and kitchen areas.

PRODUCTS	QUANTITY
Dymonic 100	450 Sausages
TREMflex 50	1000 Cartridges
TREMglaze 50	2000 Sausages
Spectrem 2	960 Sausages
illmod 600	50m
Paraseal LG	3500m ²
TREMproof 250GC	1000m ²
Vulkem H2 Plus	10,000m ²
Vulkem NEM	7000m ²
Vulkem 350NF-R/360NF/951NF	800m ²
TREMcrete NWP	400m ²
Deckshield ED Rapide with coloured quartz	500m ²

Challenge

With such a sophisticated block of apartments, located on the banks of the Swan River, this project posed many challenges through not only its complex design, but also its functionality and physical location, with challenges literally from the roof to the basement and everything in between.

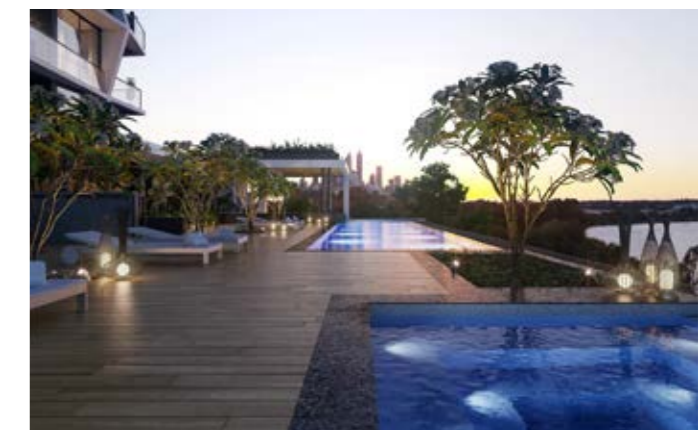
Solution

The benefit of partnering with such a diverse company as Tremco CPG, is Tremco's ability to provide solutions for many different areas of the construction envelope.

Projects like Parallel Apartments are a perfect example of how Tremco CPG can really provide succinct building solutions and support for the builder and developer for any construction project. Backed by brands like Tremco, Flowcrete, illbruck, Willseal, Nullifire and more, you can have confidence that the solutions and systems provided will be top quality and compatible with each other, providing complimentary solutions for the building.

Tremco CPG were able to utilise their diverse product range to provide a comprehensive solution for Parallel Apartments in the below areas:

- **Roof:** With regular pedestrian traffic on the roof, we recommended and installed Vulkem 350NF-R/951NF/951NF installing over 800m².
- **Balconies:** The 100 tiled balconies within the complex saw Vulkem NEM and Vulkem H2 Plus installed from Tremco's Waterproofing range.
- **Windows:** With over 500 windows and doors, Illmod 600 was specified around all window and door perimeters. For the windows, almost 2000 sausages of TREMglaze 50 and 1000 sausages of TREMflex 50 has been installed to ensure a strong bond with the frame and window.
- **Internal Wet Areas:** Tremco's Vulkem NEM (Non Exposed Membrane) and Vulkem H2 Plus were specified to install in over 330 internal wet areas.
- **Planter Boxes:** Over 1000m² of TREMproof 250GC with anti-root additive installed.
- **Basement:** 28% of all waterproofing defects are a result of poor below grade waterproofing. Over 3500m² of Paraseal LG was installed in the basement to keep the building water-tight.
- **Car Park:** When it comes to carpark finishes, look no further than Flowcrete. For this project, over 500m² of Flowcrete Deckshield ED Rapide with coloured quartz give the customer the look and performance desired.



Tremco Construction Products Group (CPG) represents the combined power of brands including Tremco, Flowcrete, Willseal, illbruck, Nullifire, and Euclid Chemical.

Our products and services empower teams to develop, design, restore and engineer structures that are more efficient to build and maintain, are virtually impervious to the elements and can provide any look desired.

Ph: 1800 318 038

www.tremcocpg.com.au

