

**Flowcrete**  
for the world at your feet

# DECKSHIELD

Colourful deck coating solutions designed to provide slip-resistance, durability and an excellent service life, as well as stand-up to common car park coating requirements.

Part of  
**TREMCO**  
Construction Products Group

[www.flowcreteaustralia.com.au](http://www.flowcreteaustralia.com.au)





## Deckshield Range Technical Profile

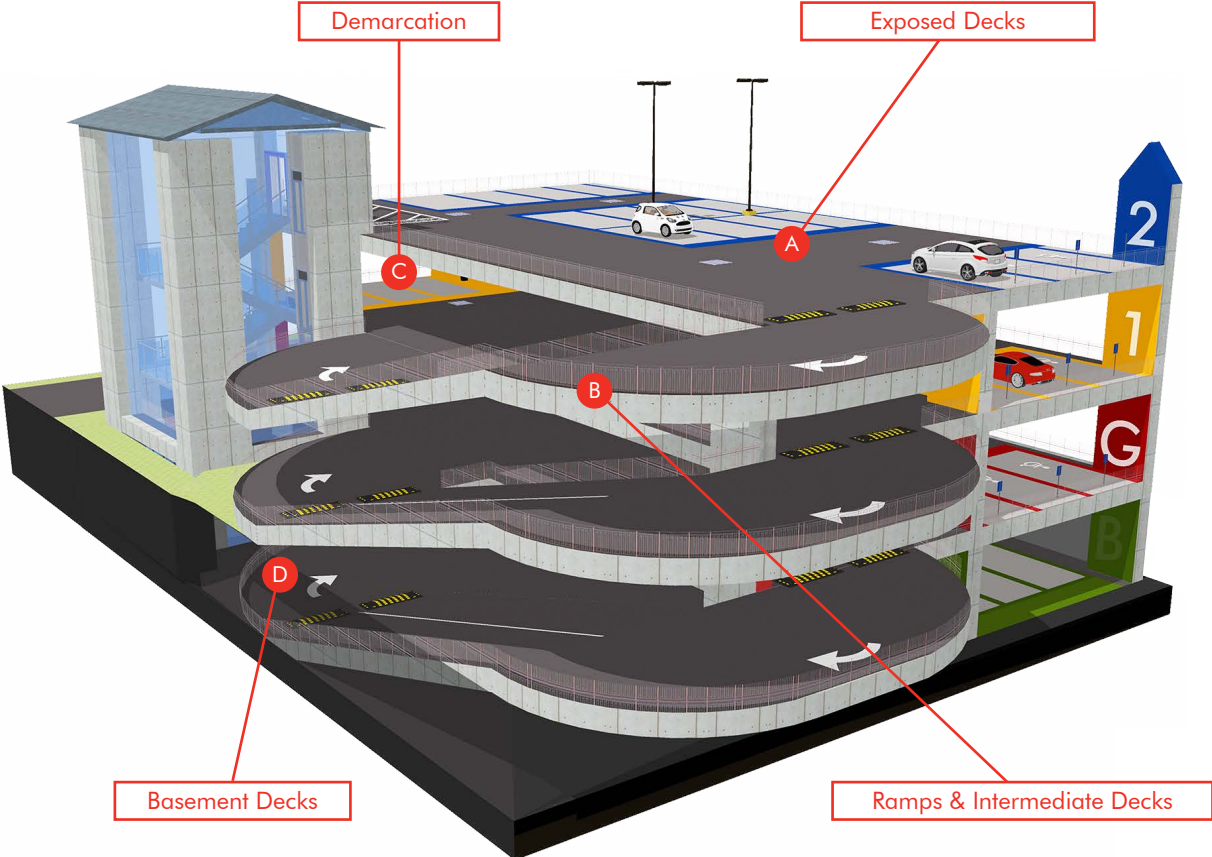
---

Multi-storey car parks have always been many customers' first point of contact with commercial destinations, but it is only recently that developers have made efforts to improve the quality of the car park experience.

Although often underestimated, the correct specification of waterproofing and surfacing materials is critical within the car park environment to delivering a long-term, structurally protected and safe facility for car park operators and vehicle owners.

Flowcrete Deckshield range offers a number of colourful deck coating solutions designed to provide slip-resistance, durability and an excellent service life, as well as stand-up to common car park problems. What's more, Flowcrete's deck coating systems are compliant with the Green Building Council of Australia Green Star Design & As Built V1.2-13.1.1B, Green Star Interiors V1.2-12.1.1B and the AS 4654.1:2012 Waterproofing Membrane standard.

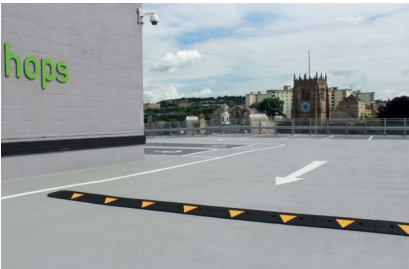
# Application Suitability



Intermediate Decks



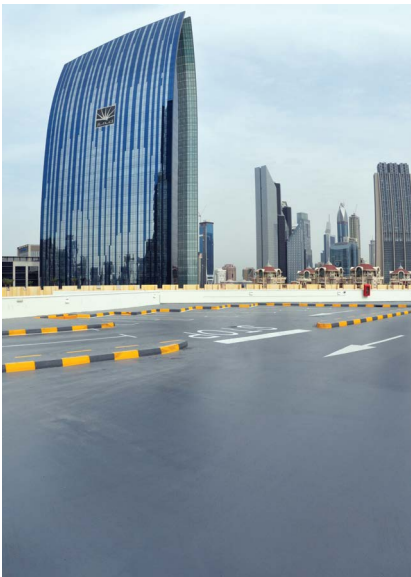
Helipad Decks



Exposed Decks



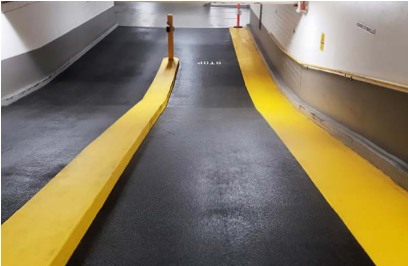
Demarcation



Kerbs / Islands



Basement Decks



Ramps



# Deckshield ED Rapide

(4mm)

Deckshield ED Rapide is a crack bridging MMA car park deck coating providing a colourful, waterproof, durable surface for exposed decks.

Typically used to cosmetically enhance and waterproof external and multi-storey car parks.



## Rapid Curing:

Fast track application, can be overcoated without mechanical preparation.



## Waterproof:

Complies with AS 4654.1:2012 Waterproofing Membrane standard.



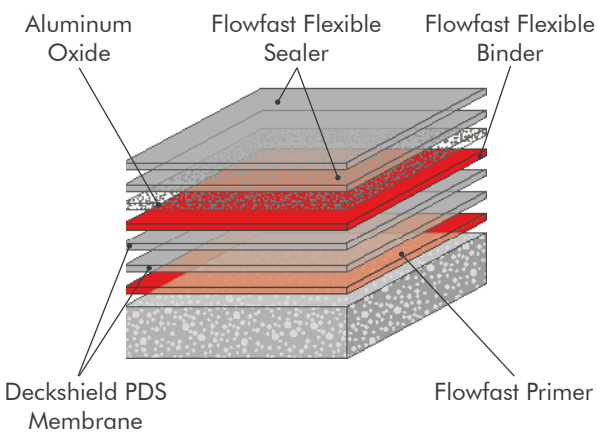
## Resistant:

Provides fire, slip, abrasion and chemical resistance.



## Low VOC:

Compliant with Green Star Design & As Built V1.2-13.1.1B, Green Star Interiors V1.2-12.1.1B



## Technical Profile

FIRE RESISTANCE	
AS/ISO 9239.1	
CHF Value	2.7 kW/m <sup>2</sup>
HF-30 Value	4.9 kW/m <sup>2</sup>
Smoke Value	226% (Mean)
SLIP RESISTANCE*	
Method described in AS4586-2013	>P5 (Based on 24 Mesh White Aluminium Oxide Aggregate)
MOISTURE TRANSMISSION	
ASTM E96/E96M - 16	WVT 9.20 g/m <sup>2</sup> /24h Permeance 63.1ng/Pa.s.m <sup>2</sup>
MOVEMENT	
AS AS4654.1:2012 Appendix B	Complies - Class III
MEMBRANE THICKNESS	
AS/NZS 4347.9:1995	1.07mm
DURABILITY	
AS4654.1:2012 Table A4 (a)	Control - Class III
AS4654.1:2012 Table A4 (b)	Water Immersion - Class III
AS4654.1:2012 Table A4 (c)	Detergent Immersion - Class III
AS4654.1:2012 Table A1 & A4 (e)	Heat Ageing 80°C - Class III
AS4654.1:2012 Table A1 & A4 (g)	Temperature Resistance -15°C to +85°C - Class III
VOC CONTENT	
ASTM D2369-10: 2015	<250 g/L
UV STABLE	
	Yes
SPEED OF CURE**	
PER COAT	
Walk On	1 hr
Vehicular Traffic	2-3 hrs
Full Chemical Cure	2-3 hrs

\*The specific slip test rating (P0-P5 range) noted in this document is based on the system design, products listed, coverage rates and specific aggregate outlined in this document. This slip test rating can and will change if the standard specification details or installation methods are altered in any way. The specific slip rating (P0-P5 range) noted in this document is based on 96 Rubber slide testing on level non-inclined surfaces. Applicators should refer to methods outlined in AS4586-2013 and SA HB 198:2014.

Assume concrete or substrate is a minimum of 25 N/mm<sup>2</sup>.

\*\*Cure times at temperatures between 0-30°C can be achieved by altering the quantity of catalyst used. For applications falling outside of this temperature range, please contact your local Flowcrete Technical Department. These figures are typical properties achieved in laboratory tests at 20°C and at 50% Relative Humidity.

# Deckshield ID Rapide

(2.5mm)

Deckshield ID Rapide is a flexible MMA car park deck coating providing a colourful, durable and rapid curing finish.

Typically used to enhance and protect multi-storey car parks and suspended floors.



## Rapid Curing:

Fast track application, dramatically reducing program time.



## Low Maintenance:

Can be overcoated without mechanical preparation.



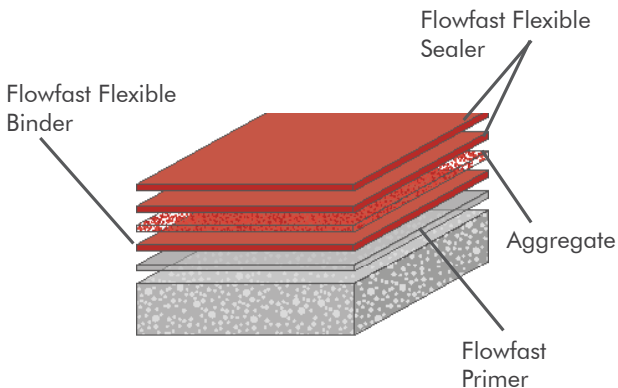
## Resistant:

Provides fire, slip, abrasion and chemical resistance.



## Low VOC:

Compliant with Green Star Design & As Built V1.2-13.1.1B, Green Star Interiors V1.2-12.1.1B



## Technical Profile

FIRE RESISTANCE	
EN 13501-1	C <sub>FL</sub> -s1
SLIP RESISTANCE*	
Method described in AS4586-2013	> P5 (Based on 24 Mesh White Aluminium Oxide Aggregate)
WATER PERMEABILITY	
Karsten Test	Nil (Impermeable)
RESISTANCE TO CHLORIDE IONS	
DOT BD47/94: Appendix B Method B4, 2 (d)	No chloride ion penetration after 28 days.
BOND STRENGTH**	
ASTM D4541 (Pull-Off Test)	> 1.5MPa
ABRASION RESISTANCE	
Taber Abrader	300mg loss per 1000 cycles 1 kg load using CS17 wheels
CHEMICAL RESISTANT	
Contact Technical Department. Resistant to petrol, diesel, antifreeze, hydraulic fluid, chlorides and battery acids.	
VOC CONTENT	
ASTM D2369-10: 2015	< 140 g/L
SPEED OF CURE***	
PER COAT	
Walk On	1 hr
Vehicular Traffic	2-3 hrs
Full Chemical Cure	2-3 hrs

\*The specific slip test rating (P0-P5 range) noted in this document is based on the system design, products listed, coverage rates and specific aggregate outlined in this document. This slip test rating can and will change if the standard specification details or installation methods are altered in any way. The specific slip rating (P0-P5 range) noted in this document is based on 96 Rubber slide testing on level non-inclined surfaces. Applicators should refer to methods outlined in AS4586-2013 and SA HB 198:2014.

\*\*Assume concrete or substrate is a minimum of 25 N/mm<sup>2</sup>.

\*\*\*Cure times at temperatures between 0-30°C can be achieved by altering the quantity of catalyst used. For applications falling outside of this temperature range, please contact your local Flowcrete Technical Department. These figures are typical properties achieved in laboratory tests at 20°C and at 50% Relative Humidity.

# Deckshield ID (1.5mm)

A flexible polyurethane deck coating system that transforms intermediate decks of multi-storey parking structures.

Typically used to cosmetically enhance, protect and brighten internal car parks and stadiums.



### Low VOC:

Compliant with Green Star Design & As Built V1.2-13.1.1B, Green Star Interiors V1.2-12.1.1B



### Reduces Noise:

Minimises unwanted noise from tyre squeal.



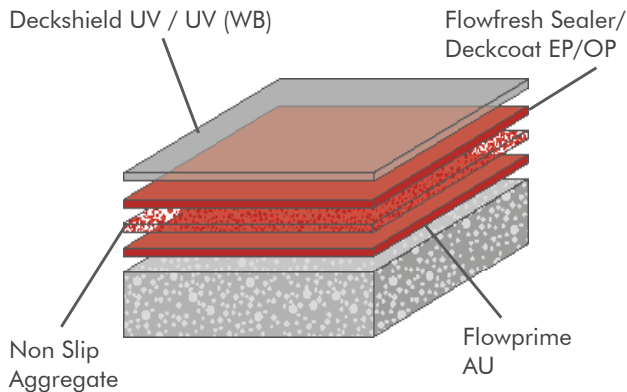
### Attractive:

Brightens up dull, dark and musty industrial environments.



### Resistant:

Hard wearing, durable, chemical and abrasion resistant.



## Technical Profile

### FIRE RESISTANCE - AS/ISO 9239.1

CHF Value: - kW/m<sup>2</sup>

Smoke Value: 4% (Mean)

### SLIP RESISTANCE\*

Method described in AS4586-2013 >P5 (Based on 24 Mesh White Aluminium Oxide Aggregate)

### TEMPERATURE RESISTANCE

Softens over 65°C, Hardens on cooling

### WATER PERMEABILITY

Karsten Test Nil (Impermeable)

### BOND STRENGTH\*\*

ASTM D4541 (Pull-Off Test) > 1.5 MPa

### ABRASION RESISTANCE

Taber Abrader ASTM D4060 1kg load using CS17 wheels 0.1g loss per 1000 cycles

### UV LIGHT RESISTANCE

Excellent (Non-Yellowing)

### CHLORIDE ION RESISTANCE

IDOT BD47/94: Appendix B Method B4, 2 (d) Result: No Chloride ion penetration in 28 days.

### VOC CONTENT

ASTM D2369-10:2015 < 140 g/L

\*[Low VOC version only]

### CHEMICAL RESISTANCE

Contact Technical Department. Resistant to petrol, diesel, antifreeze, hydraulic fluid, chlorides and battery acids.

SPEED OF CURE*	10°C	20°C	30°C
Foot Traffic	48 h	24 h	18 h
Vehicular Traffic	96 h	72 h	48 h
Full Chemical Cure	12 d	7 d	6 d

\*The specific slip test rating (P0-P5 range) noted in this document is based on the system design, products listed, coverage rates and specific aggregate outlined in this document. This slip test rating can and will change if the standard specification details or installation methods are altered in any way. The specific slip rating (P0-P5 range) noted in this document is based on 96 Rubber slide testing on level non-inclined surfaces. Applicators should refer to methods outlined in AS4586-2013 and SA HB 198:2014.

\*\*Assume concrete or substrate is a minimum of 25 N/mm<sup>2</sup>.

\*\*\*These figures are typical properties achieved in laboratory tests at 20°C and at 50% Relative Humidity.

## Deckcoat EP (0.35-1mm)

High performance, colourful, watertight car park deck coating system for car park bays and straight driveway areas.

Typically used as a hard wearing, protective, coloured floor coating in car park facilities.



### Durable:

Hard wearing, durable and abrasion resistant protective coating.



### Slip Resistant:

Textured aggregates provide a non slip surface underfoot.



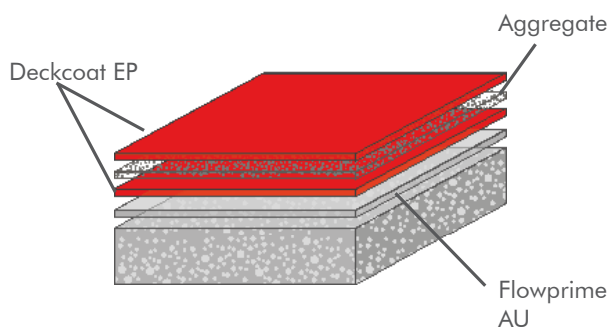
### Low Maintenance:

Seamless, hygienic finish, which requires low maintenance.



### Low VOC:

Compliant with Green Star Design & As Built V1.2-13.1.1B, Green Star Interiors V1.2-12.1.1B



## Technical Profile

FIRE RESISTANCE - AS/ISO 9239.1			
CHF Value	- kW/m <sup>2</sup>		
Smoke Value	5% (Mean)		
SLIP RESISTANCE*			
Method described in AS4586-2013	> P3 (Based on 60 Mesh White Aluminium Oxide Aggregate)		
TEMPERATURE RESISTANCE			
Tolerant up to 60°C			
WATER PERMEABILITY			
Karsten Test	Nil (Impermeable)		
SURFACE HARDNESS			
Koenig Hardness Test	180 secs		
BOND STRENGTH**			
ASTM D4541 (Pull-Off Test)	> 1.5 MPa		
ABRASION RESISTANCE			
Taber Abrader BS8204-2 1kg load using CS10 wheels	80 mg loss per 1000 cycles Grade AR2		
COMPRESSIVE STRENGTH			
BS6319	> 60 N/mm <sup>2</sup>		
FLEXURAL STRENGTH			
BS6319	> 40 N/mm <sup>2</sup>		
TENSILE STRENGTH			
BS6319	> 15 N/mm <sup>2</sup>		
VOC CONTENT			
ASTM D2369-10: 2015	< 140 g/L		
SPEED OF CURE***			
	10°C	20°C	30°C
Foot Traffic	48 h	24 h	18 h
Vehicular Traffic	96 h	72 h	48 h
Full Chemical Cure	12 d	7 d	6 d

\*The specific slip test rating (P0-P5 range) noted in this document is based on the system design, products listed, coverage rates and specific aggregate outlined in this document. This slip test rating can and will change if the standard specification details or installation methods are altered in any way. The specific slip rating (P0-P5 range) noted in this document is based on 96 Rubber slide testing on level non-inclined surfaces. Applicators should refer to methods outlined in AS4586-2013 and SA HB 198:2014.

\*\*Assume concrete or substrate is a minimum of 25 N/mm<sup>2</sup>.

\*\*\*These figures are typical properties achieved in laboratory tests at 20°C and at 50% Relative Humidity.

Part of



*Construction Products Group*



1800 318 038



[specifications@tremco.com.au](mailto:specifications@tremco.com.au)



[/company/flowcreteaustralia](https://www.linkedin.com/company/flowcreteaustralia)



[www.flowcreteaustralia.com.au](http://www.flowcreteaustralia.com.au)



[Tremco CPG Australia](https://www.youtube.com/Tremco_CPG_Australia)



[facebook.com/flowcreteaust](https://www.facebook.com/flowcreteaust)

\*Whilst every care has been taken to ensure that the information included in this document was accurate at the time of printing, Tremco CPG Australia Pty Ltd reserves the right to change product specifications at any time without prior notice. The photographs and colours reproduced in this publication are within the constraints of the printing process and are not to be used for matching purposes. All photographs are used for approximate representation only and may not show the actual products on offer. E&OE.



EUCLID CHEMICAL