

E³-FLOWABLE

High Flow Epoxy Grout



EUCLID CHEMICAL

Product Overview

E³-FLOWABLE is a three component, high flow, high strength, expansive epoxy grout designed for large plates and narrow configurations where flowability is critical.



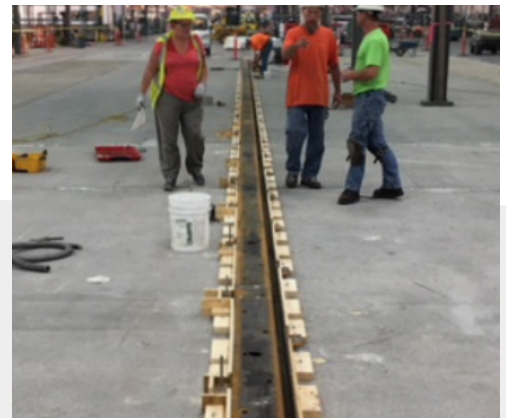
Features & Benefits

- Supplied in small units for ease of mixing and placing
- Positive effective bearing area
- Excellent flow
- High chemical resistance
- High early strengths for fast return to service
- Clean tools with soap and water

Typical Applications

Precision non-shrink epoxy grouting applications including:

- Tight clearance grouting of equipment subject to dynamic loading
- Crane Rail Grouting
- Anchor bolt grouting
- Precision alignment of generators, compressors, electric motors and pumps



Typical Performance Properties At 21°C

PROPERTY		STANDARD	RESULT
Compressive Strength	1 Day	ASTM C579 (Method B)	69 MPa
	7 Days		90 MPa
	28 Days		95 MPa +
Compressive Creep		ASTM C1181 (2.8 MPa @ 60°C)	28 days ... 5.8 x 10 ⁻³ in/in/°F
Flexural Strength	28 Days	ASTM C580	27 MPa
Tensile Strength	28 Days	ASTM C307	13.2 MPa
Bond Strength		ASTM C882	Concrete Failure
Coefficient of Thermal Expansion (7 Days)		ASTM C531	17.0 x 10 ⁻⁶ (23 to 99°C)
Thickness per Lift			Minimum: 10mm; Maximum: 120mm
Effective Bearing Area		ASTM C1339	≥ 95%
Chemical Resistance			Excellent resistance to most industrial chemicals
Working Time			60 minutes
<p><i>*Compressive Strength results published above are typical results based on laboratory testing using 50mm cubes. Variations of these results can be expected if alternative sample sizes, or test methodology is used.</i></p>			

SERVICE AND SUPPORT:
 Simon Ross
 National Business Development
 Manager – Grouts & Repairs
 T. 1800 318 038
simon.ross@tremco.com.au

Tremco Construction Products Group (CPG) represents the combined power of brands including Nudura, Willseal, and Tremco, along with Tremco CPG affiliates Flowcrete, illbruck, Nullifire, Duram and Euclid Chemical.

