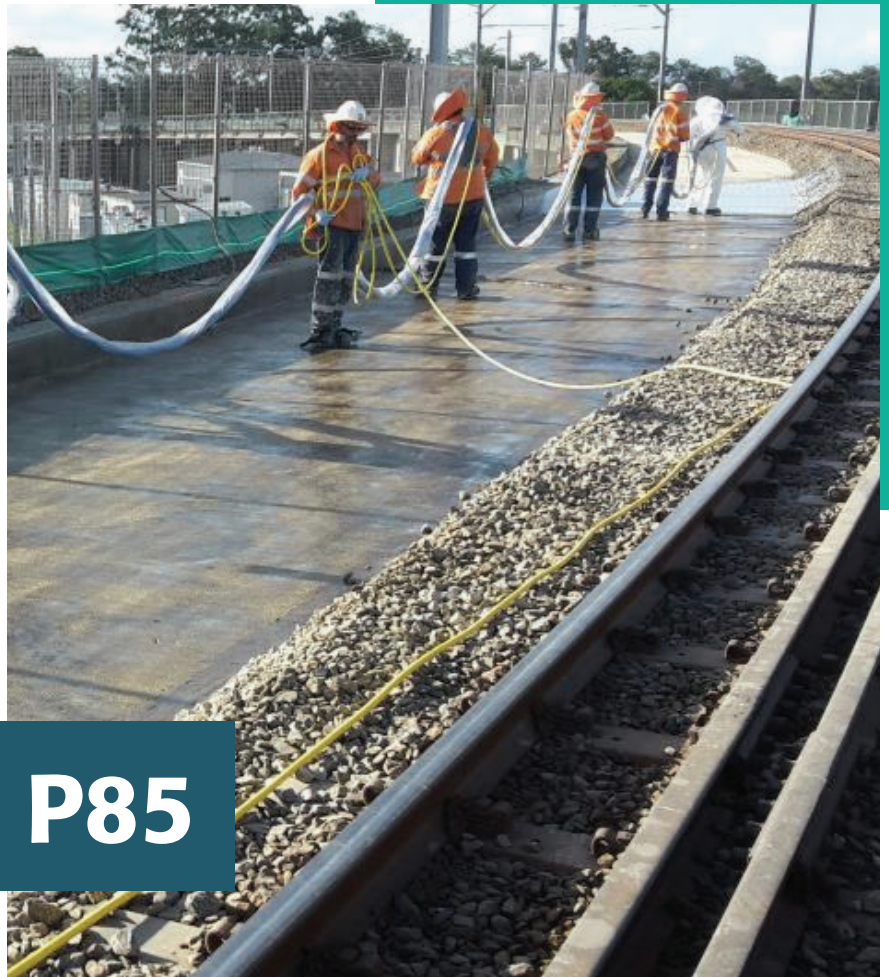




# Quick Application for Large Areas



## TREMproof P85

Are you under pressure to meet tight construction deadlines? Do you need an external, above ground basecoat that is not in a high traffic area? TREMproof P85 is ideal for large area decks, roofs, basements or tanks that requires a base coat waterproofing solution.

TREMproof P85 is 100% solids, two-part, sprayable polyurea waterproofing membrane. It has excellent abrasion resistance and it's low permeability, rapid curing properties mean that it dries within minutes upon application allowing you to get on with completing a quality job quickly and efficiently. Because it's solvent free and low VOC, TREMproof P85 is safe to use.

*TREMproof P85 is not UV stable and not suitable for trafficable areas. Tremco recommends adding a UV stable top coat such as Vulkem 346 or Vulkem 951NF to prevent TREMproof P85 from becoming yellow and brittle. A suitable primer such as TREMcoat MPE is also required prior to application. For more information, refer to the technical data sheet for this product.*



### APPLICATIONS & USES

- ✓ Podiums
- ✓ Roof Tops
- ✓ Balconies
- ✓ Planter Boxes
- ✓ Cut & Covered Tunnels
- ✓ Non Potable Water Tanks
- ✓ Retaining Walls/Basements (Positive Side Waterproofing)



For more information on TREMproof P85 visit our website [www.tremco.com.au](http://www.tremco.com.au) or call our office 02 9638 2755 to speak to a Tremco Representative who can provide assistance in the selection and specification of products.

**Tremco- Protecting Your Reputation is How We've Built Ours**



02 9638 2755



[www.tremco.com.au](http://www.tremco.com.au)



[marketing@tremco.com.au](mailto:marketing@tremco.com.au)